



LABORATORY GROWN DIAMOND REPORT

April 13, 2022	
IGI Report Number	LG523275289
Description	LABORATORY GROWN DIAMOND
Shape and Cutting Style	PEAR BRILLIANT
Measurements	10.87 X 7.05 X 4.38 MM
GRADING RESULTS	
Carat Weight	2.00 CARATS
Color Grade	E
Clarity Grade	VS 1
ADDITIONAL GRADING INFORMATION	
Polish	EXCELLENT
Symmetry	EXCELLENT
Fluorescence	NONE
Inscription(s)	LABGROWN IGI LG523275289

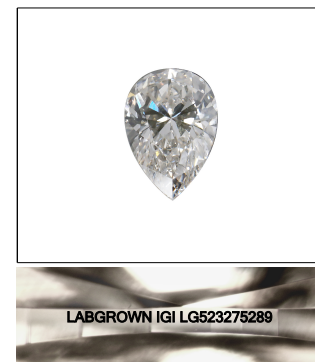
Comments: As Grown - No indication of post-growth treatment.
This Laboratory Grown Diamond was created by High Pressure High Temperature (HPHT) growth process.
Type II

www.igi.org

LABORATORY GROWN
DIAMOND REPORT

GRADING SCALES

COLOR GRADING SCALE	CL		NC	FT	VLT	LT
	COLORLESS D-F		NEAR COLORLESS G-J	FAINT K-M	VERY LIGHT N-R	LIGHT S-Z
CLARITY (10x) GRADING SCALE	FL	IF	VVS	VS	SI	I
	FLAWLESS INTERNALLY FLAWLESS		VERY VERY SLIGHTLY INCLUDED	VERY SLIGHTLY INCLUDED	SLIGHTLY INCLUDED	INCLUDED



LASERSCRIBESM
Sample Image Used

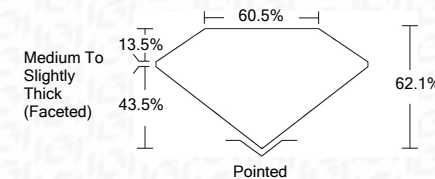


© IGI 2020, International Gemological Institute

FD - 10 20

LABORATORY GROWN DIAMOND REPORT

April 13, 2022	
IGI Report Number	LG523275289
Description	LABORATORY GROWN DIAMOND
Shape and Cutting Style	PEAR BRILLIANT
Measurements	10.87 X 7.05 X 4.38 MM
GRADING RESULTS	
Carat Weight	2.00 CARAT(S)
Color Grade	E
Clarity Grade	VS 1



ADDITIONAL GRADING INFORMATION

Polish	EXCELLENT
Symmetry	EXCELLENT
Fluorescence	NONE
Inscription(s)	LABGROWN IGI LG53275289

Comments: As Grown - No indication of post-growth treatment.
This Laboratory Grown Diamond was created by High Pressure High Temperature (HPHT) growth process.
Type II



April 13, 2022	IGI Report No. LG523275289	PEAR BRILLIANT	2.00 CARATS	VSI
10.67 X 7.05 X 4.38 MM				62.1%
Carat Weight				60.5%
Color Grade		Medium to Slightly Thick (Feasible)		
Clarity Grade				
Depth				
Table				
Grade				
Culet		Pointed		
Polish		EXCELLENT		
Symmetry		EXCELLENT		
Fluorescence		NONE		
Inscriptions(s)		LAGBROWN IGI		
Comments:		LABGROWN IGI		
		LG523275289		
As Grown - No indication of post-growth				
The Laboratory Grown Diamond was created by High Pressure High Temperature (HPHT) growth process.				

As Grown - No indication of post-growth treatment.